

Name: \_\_\_\_\_ Learning Mentor Group: \_\_\_\_\_

Teacher's Name: \_\_\_\_\_ Class: \_\_\_\_\_

# Discovery Faculty Extended Learning Project

## Geography Year 7

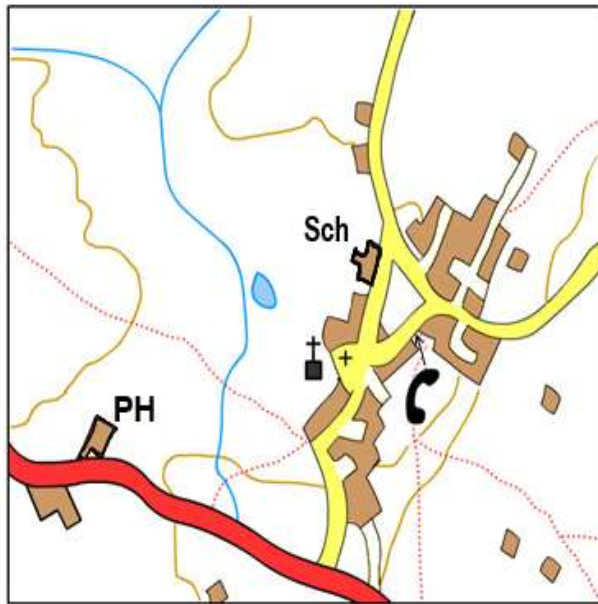
### Booklet 3 Map Skills



Task number	Homework due date
1	
2	
3	
4	
5	
6	

# Task 1 O.S. map symbols

Identify all the symbols you can spot in this Ordnance Survey map grid square.



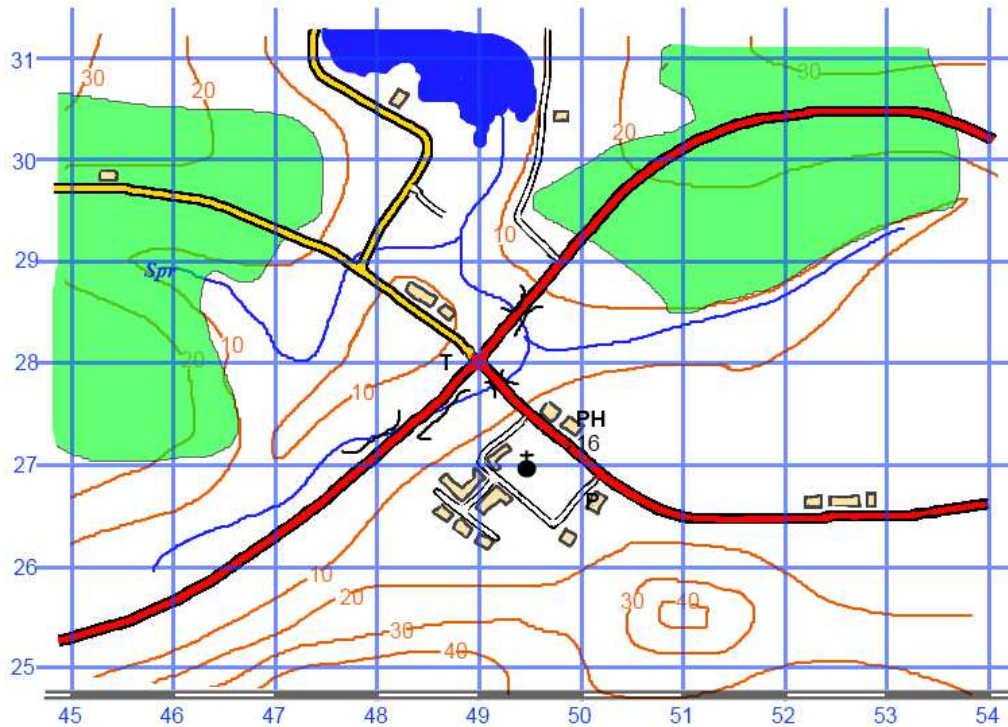
Hint - There are 13 different symbols to identify!


1. ....
2. ....
3. ....
4. ....
5. ....
6. ....
7. ....
8. ....
9. ....
10. ....
11. ....
12. ....
13. ....

# Task 2 Map Reading

## 4 figure and 6 figure grid references

Use this map to answer the questions



1. What type of road passes through grid square 5126?
2. Give the 4 figure grid reference of the Post Office?
3. Give the six figure grid reference for:
  - a. the point where the stream enters the lake.
  - b. The Post Office
  - c. The church
  - d. The building in grid square 4529
4. What is the feature at 459289?
5. What is the feature at 493285?
6. There is a Youth Hostel at 493293 draw the correct symbol at this point.
7. The village school is at 517266 draw  at the correct point.
8. Create 3 questions which will test another person's understanding of 4 and 6 figure grid references.

A .....

.....

B .....

.....

C .....

.....

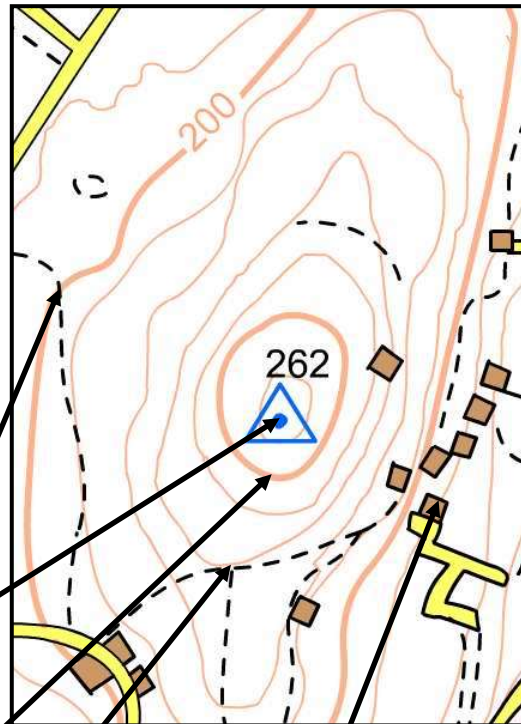
.....

# Task 3 Understanding relief - the shape of the land

There are three ways to show relief on a map.

Which two ways are shown on this OS style map?

- 1) .....
- 2) .....



What is the height at this point? .....

What is this symbol?.....  
What is the height at this point? .....

What is the height at this point? .....

What is the height at this point? .....

What is the height of this building?  
.....

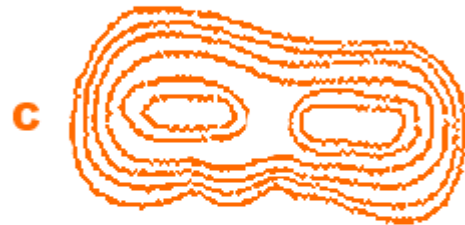
On an O.S. (Ordnance Survey) Map why are darker/thicker brown lines used?  
.....  
.....

What is the height difference or interval between two contour lines on an O.S. map Scale 1:50000?  
.....

# Task 4 Contour Lines

Join the correct contour lines to the correct shaped hills with a line.

Remember: the more contour lines there are, the higher the hill.



**1**



**2**



**3**



**4**



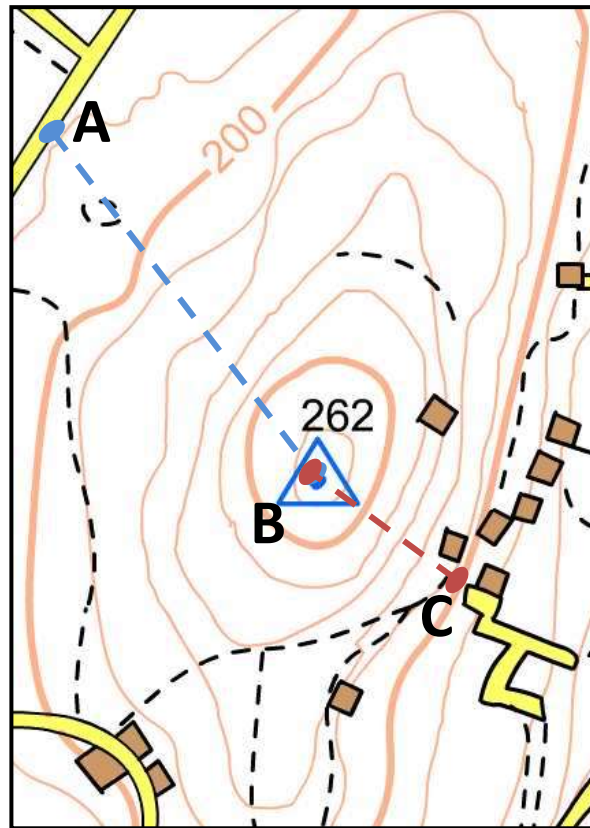
**5**



**6**



## Task 5 Steepness of a Slope Or Gradient



Which is the longest route to the top of the hill?

AB or CB .....

Which is the steepest route?

AB or CB .....

How many metres do you climb to reach the summit B?

From A? .....

From C? .....

Which route would you use and why?

.....

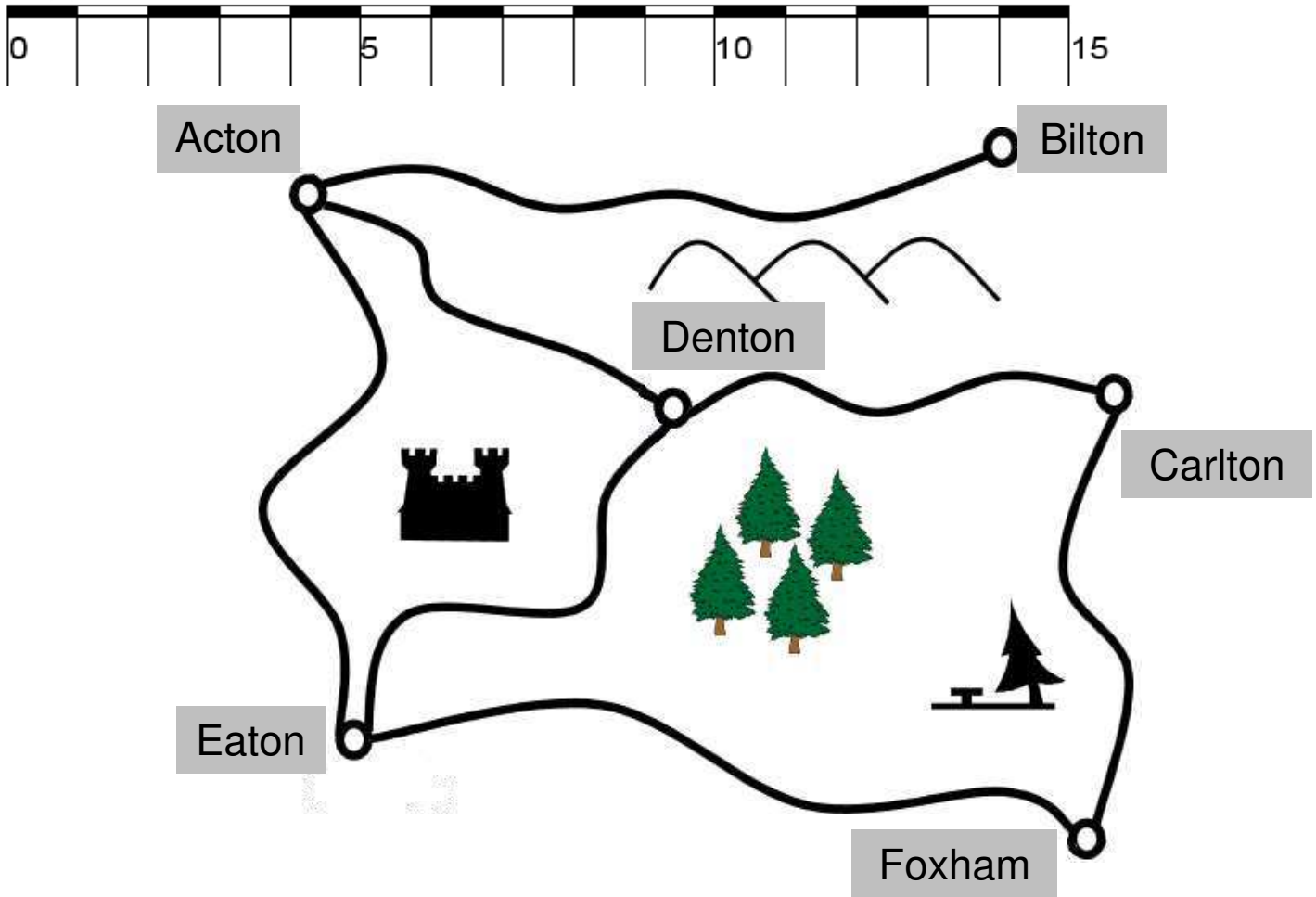
.....

.....

Draw a line on the map which would not be as steep as from either A or B.

## Task 6 Measuring distances

Scale: 1cm = 1km



1. How far is it from Acton to Bilton? \_\_\_\_\_
2. What is the distance between Denton and Foxham? \_\_\_\_\_
3. How far is it from Eaton to Bilton? \_\_\_\_\_
4. What is the distance between Eaton and Foxham? \_\_\_\_\_
5. Which is the shortest distance between Carlton and Foxham?  
\_\_\_\_\_
6. What is the difference between the distance from Carlton to Denton, and the distance from Acton to Eaton? \_\_\_\_\_